

**FOR LEASE**

# High Touch Building

110 S. Main St, Wichita KS 67202

BROKERAGE  
CONNECTION

**InSite**  
REAL•ESTATE•GROUP



## PROPERTY INFO

**Lease Rate:** \$12-15.00/SF

**Lease Type:** Full Service

**Building Size:** 107,592 SF



### 1st Floor:

Suite 100: 1,200 SF

Suite 105: 3,425 SF

Storage: 2,960 SF

### 2nd Floor:

Suite 201: 3,910 SF

Suite 202: 960 SF

### 3rd Floor:

Suite 300: 10,000 SF

### 4th Floor:

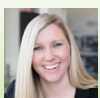
Suite 400: 10,000 SF

### 5th Floor:

Suite 500: 10,000 SF

### 10th Floor:

Suite 1000: 9,000 SF



Kristin Stang, CCIM  
kstang@insitere.com

(316) 518-9399

608 W. Douglas #106, Wichita KS

**InSite**  
REAL•ESTATE•GROUP

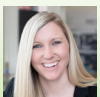
**FOR LEASE**

# High Touch Building

110 S. Main St, Wichita KS 67202

BROKERAGE  
CONNECTION

**InSite**  
REAL•ESTATE•GROUP



Kristin Stang, CCIM  
kstang@insitere.com

(316) 518-9399

608 W. Douglas #106, Wichita KS

**InSite**  
REAL•ESTATE•GROUP

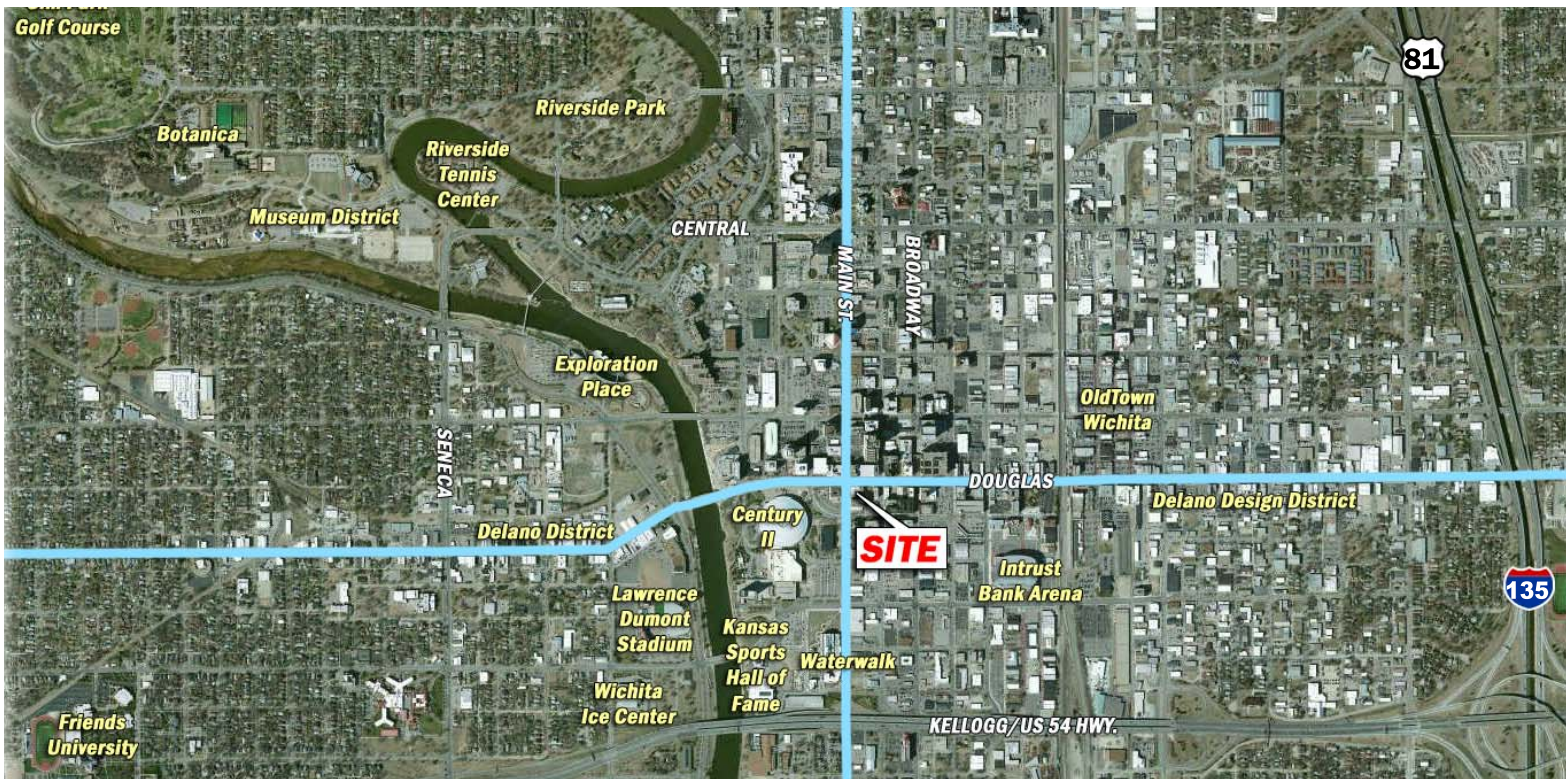
**FOR LEASE**

# High Touch Building

110 S. Main St, Wichita KS 67202

BROKERAGE  
CONNECTION

**InSite**  
REAL ESTATE GROUP



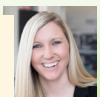
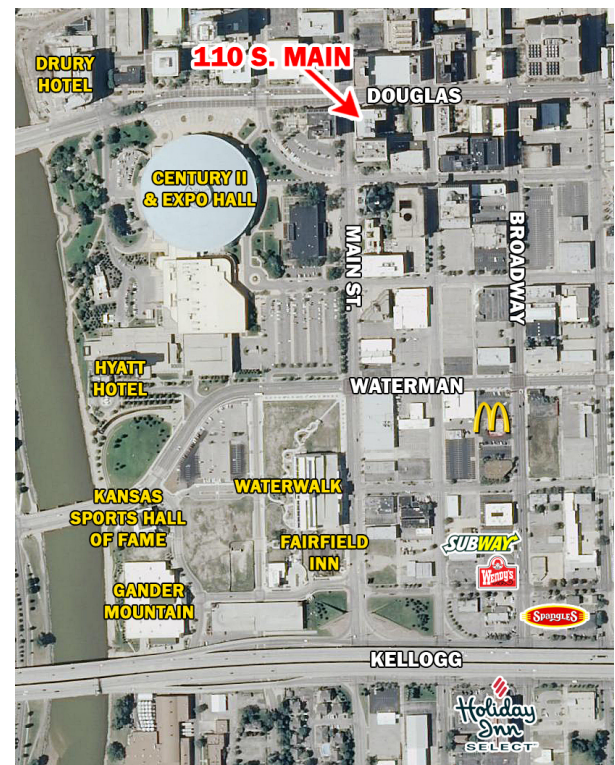
## AREA INFO

Located near Main & Douglas; the High Touch building borders Century II, the Historical Museum, the Wichita Central Library, and Heritage Square Park.

This location on Main St is easy to find and quick to get on and off of Kellogg/Highway 54.

The building is within walking distance of Intrust Bank Arena, the Orpheum Theater, and the new baseball stadium development.

Annual festivals include the Tallgrass Film Festival, Riverfest, Wagonmasters Chili Cookoff and Automobilia. First Fridays, Ballet Wichita and the Wichita Symphony host events monthly.



Kristin Stang, CCIM  
kstang@insitere.com

(316) 518-9399

608 W. Douglas #106, Wichita KS

**InSite**  
REAL ESTATE GROUP